



SPREAD CYLINDERS “CY0109” “CY00822” “CY0109/G” “CY00822/G”



LARZEP, S.A.
Avenida Urutiaga, 6
48269 MALLABIA, SPAIN
Tel. +34 943 171200
Fax. +34 943 174166
e-mail: sales@larzep.com
www.larzep.com

LARZEP AUSTRALIA PTY. LTD.
104 Wedgewood Road,
HALLAM, VIC. 3803 AUSTRALIA
Tel. +61 (3) 9796 3744
Fax. +61 (3) 9796 5964
e-mail: sales@larzep.com.au
www.larzep.com.au

LARZEP GB LTD.
3 Commerce Way - Leighton Buzzard
BEDS LU7 4RW UNITED KINGDOM
Tel. +44 1525 377819
Fax. +44 1525 851990
e-mail: sales@larzep.co.uk
www.larzep.co.uk

INDEX

1. BEFORE USING THE EQUIPMENT AND SECURITY -----2
2. TECHNICAL FEATURES-----2
3. MANUFACTURER’S DECLARATION-----3
4. WARRANTY -----3
ANNEX

❖ GENERAL DRAWING

1. BEFORE USING THE EQUIPMENT AND SECURITY.

The spread cylinder "CY0109" and "CY00822", are designed and manufactured tools, under our internal quality standard and the supervision that forces the rule ISO9001.

The operator must be familiarized with the use of this tool, must be consequent with the inherent risk of the use of the hydraulic tools.

Use the appropriate protection devices such as:



If any malfunction in the equipment is detected, never use it ,until be repaired by specialist personnel. Store it far of the operators in a safe place.

Watch the extreme environmental conditions and keep greased the equipment.

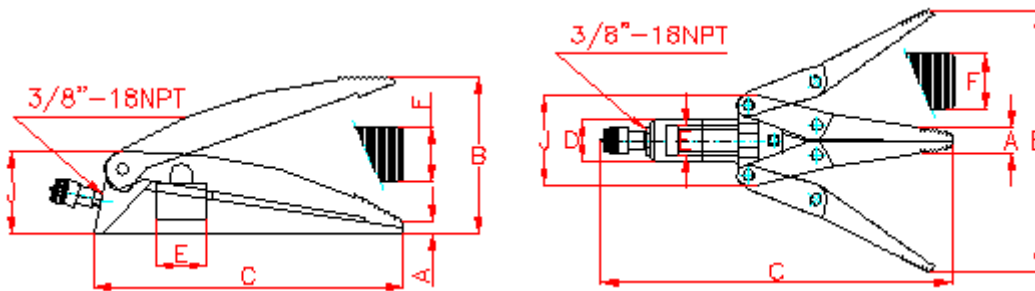


Never store the tool in a place where the children could have access to it.

This tool has been designed for operations such as: pieces separation, movement of blocks separated by a few millimetres, in maintenance operations, machine’s movements, etc.. These tools are served in the maintenance sets like a standard element.

The omission of this instruction manual, could produce personal injuries and material damages, that LARZEP, S.A. will not be responsible.

2. TECHNICAL FEATURES.



Capacity Tn.(kN)	Pressure bar	Stroke Mm	LARZEP	Area cm ²	Oil cap cm ³	A mm.	B mm.	C mm.	D mm.	E mm.	F mm.	J mm.	Weight Kg
1 (70)	700	75	CY0109	6,6	10	15	90	225	_	29	55	55	2
0,8 (8)	550	189	CY00822	14,5	63	31	220	443	58	43	50	124	7

We will have in mind that the technical features for the references CY0109/G and CY00822/G are the same as the references CY0109 and CY00822, except the coupler.
The references CY0109 and CY00822 are provided with a low flow female quick coupler AZ3240, whereas the references CY0109/G and CY00822/G are provided with a high flow female quick coupler AZ3140.

3. DECLARATION OF MANUFACTURER.

LARZEP, S.A., located in Avda. Urriaga 6, 48269 Mallabia (Vizcaya); it declares that the spread cylinder "CY0109", "CY0109/G", "CY0822" and "CY00822/G", are not a machine in itself, therefore will not be complete nor safe, except in the cases in which one is reconciled to the set of a hose and pump that correspond by dimensions and force of work to the cylinder.

The components described in the chapter of technical characteristics of this manual, are assembled by LARZEP, S.A., this cylinders cannot be put in use until it reunites the conditions necessary to be described like a complete and safe machine that it fulfils the requirements of the normative CE, in case that it is fulfilled will be able to take the noticeable CE.

Nevertheless, LARZEP, S.A. works in agreement to our standards of quality and under the control those norm ISO 9001 forces.

Sign:
D. Juan Carlos Bustos
Director of Quality.

4. WARRANTY.

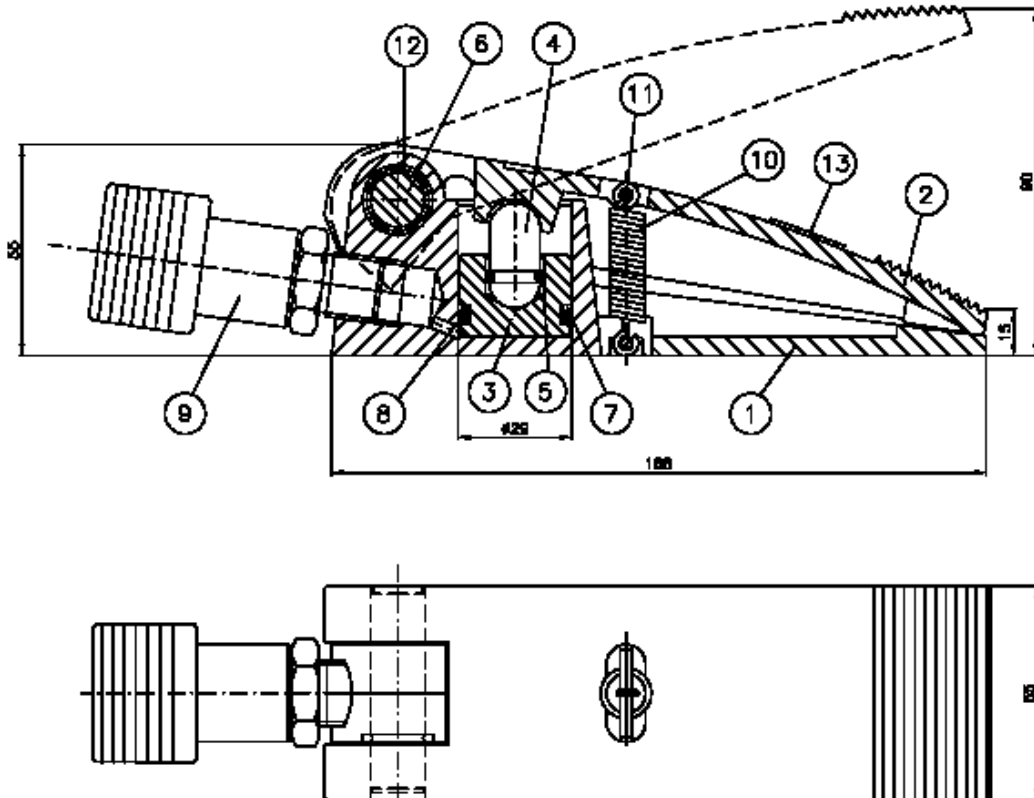
LARZEP, S.A. guarantees its products against all design and manufacturing defects for the durations of two years from the date of purchase. This guarantee does not include the ordinary wear of both metal and non-metal parts, abuse, using the equipment beyond its rated capacity and any wear or damage incurred as a result of using a hydraulic fluid which is not recommended by **LARZEP, S.A.**

Please note that if the equipment is disassembled or serviced by anyone other than an authorized service dealer or by **LARZEP, S.A.**, this guarantee is rendered null and void.

In the event of a warranty claim, return the equipment, to **LARZEP, S.A.** or the authorized dealer which sold you the hydraulic equipment, **LARZEP, S.A.** will repair or replace the faulty equipment, whichever is deemed most appropriate. **LARZEP, S.A.** shall not be held liable for any consequential damages or losses, which may occur as a result of faulty equipment

SEAL KIT

SPREAD CYLINDER	CY0109
CAPACITY	1 Tn (10 kN)
MINIMUM HEIGHT	15 mm
MAX.TIP CLEARANCE	90 mm
STROKE	15 mm
WEIGHT	2 Kg

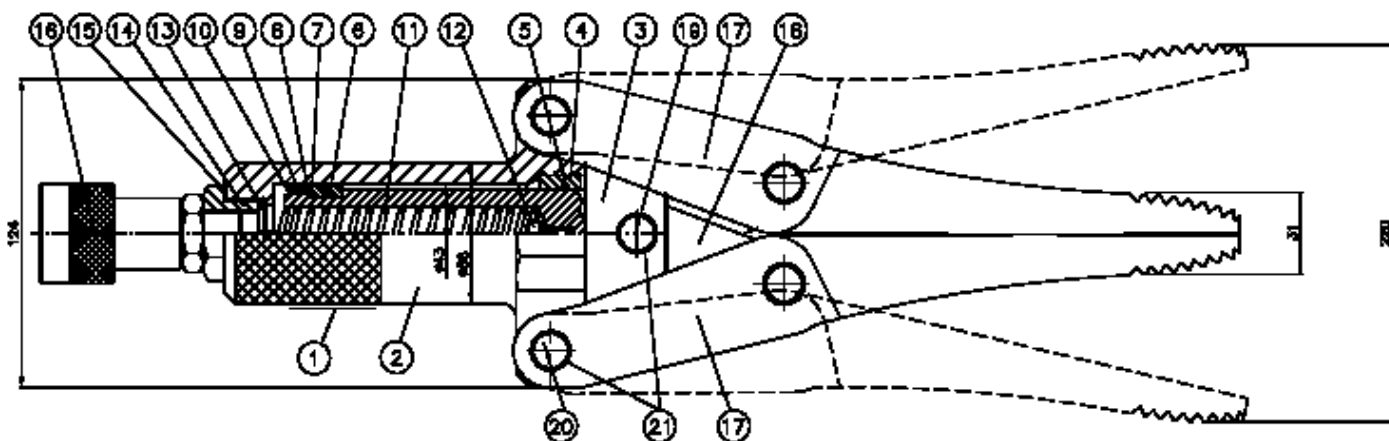


N	DESCRIPTION	REFERENCE	N° PIECES
1	BASE	50H0004	1
2	JAWS	24L0006	1
3	PISTON	53I0001	1
4	SADDLE	56P0001	1
*5	O-RING Ø9.19x2.62	12A 0047	1
6	AXIS	15I0026	1
*7	SEGMENT	57A 0077	1
*8	O-RING Ø21.82x3.53	12A 0090	1
9	COUPLING	AZ3240	1
10	SPRING	13A 0031	1
11	PIN	15I0027	2
12	RING	14D0005	1
13	LABEL	30A 018	1

The reference CY0109/G is provided with AZ3140 quick coupler.

SEAL KIT

SPREAD CYLINDER	CY00822
CAPACITY	0.8 Tn (8 kN)
MIN. HEIGHT	31 mm
MAX. TIP CLEARANCE	220 mm
WEIGHT	7 Kg
STROKE	53 mm



N°	DESCRIPTION	REFERENCE	N° PIECES
1	LABEL	30A 0018	1
2	BODY	52I0001	1
3	PISTON	53I0002	1
4	GUIDE	55I0001	1
*5	O-RING Ø37.82x1.78	12A 0091	1
6	SECTOR SLEEVE	58A 0029	2
*7	WASHER	57D0001	1
*8	SEGMENT	57A 0078	1
*9	COLLAR Ø30x42x10	12B0029	1
10	RING	14D0006	1
11	SPRING	13A 0032	1
12	SCREW	14A 0004	1
13	PIN	14E0012	1
14	TRHEAD	15J0009	1
*15	COPPER RING	57B0010	1
16	COUPLER	AZ3240	1
17	JAWS	24L0007	2
18	JAW CONNECTOR	24F0008	2
19	PIN	15I0028	1
20	PIN	15I0029	4
21	ELASTIC RING	14D0007	10

The reference CY00822/G is provided with the AZ3140 quick coupler.