

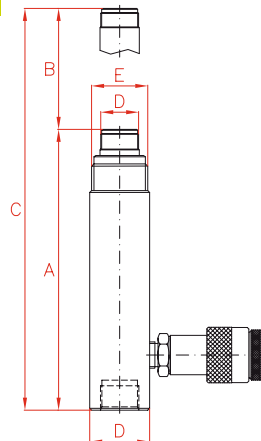
**MAINTENANCE SETS**



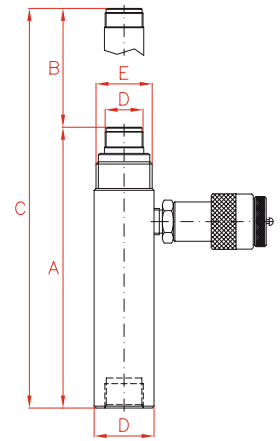
**LARZEP advantages**

- Made of a series of attachments that combined with the pump, cylinder and hose, enable configuration of specific tools designed for various operations such as pushing, separating, joining, lifting, compressing, stretching and fixing.
- 5, 10 and 20 Tn models available.
- Supplied in a storage/transport case.

**KC**



**T**



Capacity	Model	A	B	C	D	E
Tn	LARZEP	mm	mm	mm	BSP	UN
5	<b>KC00511</b>	237	115	352	3/4"-14 BSP	1 1/2"-16 UN
10	<b>KC01113</b>	274	133	409	1 1/4"-11 BSP	2 1/4"-14 UNS
20	<b>KC02013</b>	286	130	416	1 3/4"-11 BSP	3 5/16"-11 UN
5	<b>T00514/5*</b>	306	140	446	3/4"-14 BSP	2 1/4"-14 UNS
5	<b>T00514/10*</b>	306	140	446	1 1/4"-11 BSP	2 1/4"-14 UNS
10	<b>T01015*</b>	308	140	448	1 3/4"-11 BSP	3 5/16"-11 UN

\* Optional

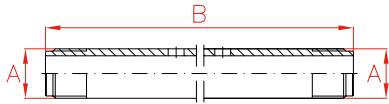
The cylinder provides the indicated nominal force, but as some attachments can induce cylinder side loading, the unit can only be used at 50% of its capacity, at a **MAXIMUM WORKING PRESSURE** of 350 bar.



		Capacity (Tn)		10		20	
No.	Model	5	5	10	10	20	20
		CA0510	CA0513	CA1110	CA1113	CA2010	CA2013
1	Case	CA051301	CA051301	CA101301	CA101301	CA101301	CA101301
2	Pump	W00307	W00307	W10707	W10707	W10707	W10707
3	Hose	AP2015	AP2015	AP2015	AP2015	AP2015	AP2015
4	Coupling	AZ3220	AZ3220	AZ3220	AZ3220	AZ3220	AZ3220
5	Cylinder	KC00511	KC00511	KC01113	KC01113	KC02013	KC02013
7	Tube M	CA051307	CA051307	CA101307	CA101307	-	-
8	Tube L	CA051308	CA051308	CA101308	CA101308	CA201308	CA201308
9	Tube X	CA051309	CA051309	CA101309	CA101309	CA201309	CA201309
10	Tube XL	CA051310	CA051310	CA101310	CA101310	CA201310	CA201310
11	Collar toe ram	CA051311	CA051311	CA101311	CA101311	CA201311	CA201311
12	Collar toe plunger	CA051312	CA051312	CA101312	CA101312	-	-
13	Pipe coupling (3)	CA051313	CA051313	CA101313	CA101313	CA201313	CA201313
14	Male connector	CA051314	CA051314	CA101314	CA101314	CA201314	CA201314
15	Head	CA051315	CA051315	CA101315	CA101315	CA201315(2)	CA201315(2)
16	Rubber head (2)	CA051316	CA051316	CA101316	CA101316	-	-
17	Base	CA051317	CA051317	CA101317	CA101317	-	-
18	“V”	CA051318	CA051318	CA101318	CA101318	-	-
19	Wedge head	CA051319	CA051319	CA101319	CA101319	-	-
20	Slip-lock extension	CA051320	CA051320	CA101320	CA101320	-	-
21	Locking pin (2)	CA051321	CA051321	CA101321	CA101321	-	-
22	Collar clamp head	CA051322	CA051322	CA101322	CA101322	-	-
23	Lock-on clamp toe	CA051323	CA051323	CA101323	CA101323	-	-
24	Spread cylinder	-	CY0109	-	CY0109	-	CY00822
25	Chain	-	CA051325	-	CA101325	-	CA201325
26	Single chain plate	-	CA051326	-	CA101326	-	CA201326
27	Double chain plate	-	CA051327	-	CA101327	-	-
28	Base (2)	-	-	-	-	CA201328	CA201328
29	Pulling cylinder*	T00514/5	T00514/5	T00514/10	T00514/10	T01015	T01015
30	Pressure gauge	AV10006	AV10006	AV10006	AV10006	AV10006	AV10006
31	Gauge adaptor	AZ1502	AZ1502	AZ1502	AZ1502	AZ1502	AZ1502

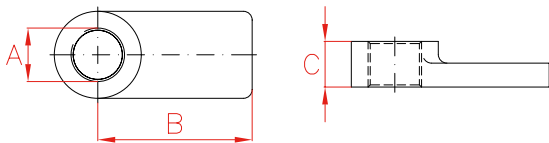
\* Optional

### 7-8-9-10 TUBE



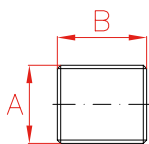
Reference	A	B
CA051307	3/4"-14 BSP	125
CA051308	3/4"-14 BSP	250
CA051309	3/4"-14 BSP	450
CA051310	3/4"-14 BSP	575
CA101307	1 1/4"-11 BSP	130
CA101308	1 1/4"-11 BSP	250
CA101309	1 1/4"-11 BSP	450
CA101310	1 1/4"-11 BSP	700
CA201308	1 3/4"-11 BSP	220
CA201309	1 3/4"-11 BSP	480
CA201310	1 3/4"-11 BSP	700

### 12 COLLAR TOE PLUNGER



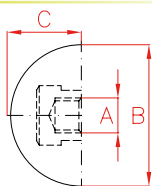
Reference	A	B	C	D
CA051312	3/4"-14 BSP	71	22	42
CA101312	1 1/4"-11 BSP	80	32	60

### 14 MALE CONNECTOR



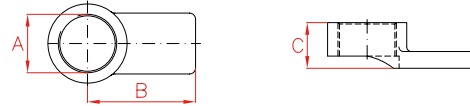
Reference	A	B
CA051314	3/4"-14 BSP	36
CA101314	1 1/4"-11 BSP	52
CA201314	1 3/4"-11 BSP	54

### 16 RUBBER HEAD



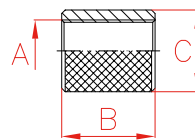
Reference	A	B	C
CA051316	3/4"-14 BSP	80	50
CA101316	1 1/4"-11 BSP	90	55

### 11 COLLAR TOE RAM



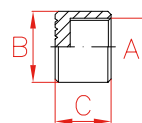
Reference	A	B	C	D
CA051311	1 1/2"-16 UN	71	31	42
CA101311	2 1/4"-14 UNS	79	38	61
CA201311	3 5/16"-12 UN	110	41	73

### 13 PIPE COUPLING



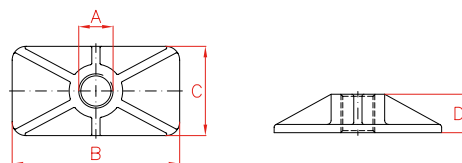
Reference	A	B	C
CA051313	3/4"-14 BSP	40	35,0
CA101313	1 1/4"-11 BSP	49	55,5
CA201313	1 3/4"-11 BSP	70	52,0

### 15 HEAD



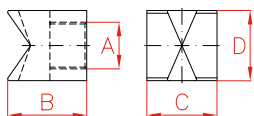
Reference	A	B	C
CA051315	3/4"-14 BSP	33	26
CA101315	1 1/4"-11 BSP	51	34
CA201315	1 3/4"-11 BSP	69	48

### 17 BASE



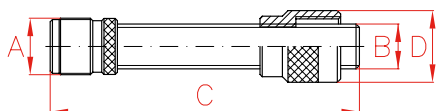
Reference	A	B	C	D
CA051317	3/4"-14 BSP	123	65	30
CA101317	1 1/4"-11 BSP	164	102	31

### 18 "V"



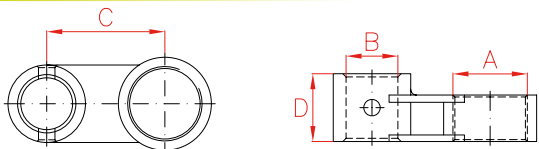
Reference	A	B	C	D
CA051318	3/4"-14 BSP	46	40	38
CA101318	1 1/4"-11 BSP	60	69	56

### 20 SLIP-LOCK EXTENSION



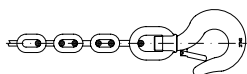
Reference	A	B	C	D
CA051320	3/4"-14 BSP	M20x2,5	138	32
CA101320	1 1/4"-11 BSP	Tr30 - 5	151	54

### 22 COLLAR CLAMP HEAD



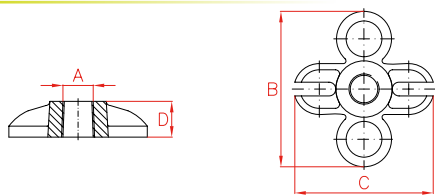
Reference	A	B	C	D
CA051322	1 1/2"-16 UN	26,7	61	36
CA101322	2 1/4"-14 UNS	42,2	68	41

### 25 CHAIN



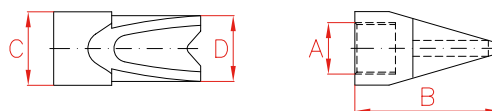
Reference	Length
CA051325	1 metre
CA101325	1 metre
CA201325	1 metre

### 27 DOUBLE CHAIN PLATE



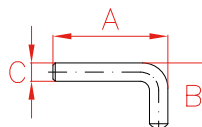
Reference	A	B	C	D
CA051327	3/4"-14 BSP	113	101	27
CA101327	1 1/4"-11 BSP	145	140	31

### 19 WEDGE HEAD



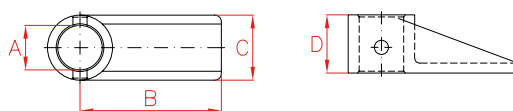
Reference	A	B	C	D
CA051319	3/4"-14 BSP	77	40	34
CA101319	1 1/4"-11 BSP	99	55	43

### 21 LOCKING PIN



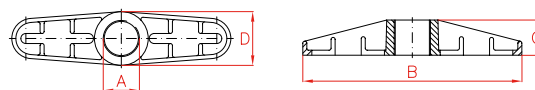
Reference	A	B	C
CA051321	50	27	8
CA101321	76	42	12

### 23 LOCK-ON CLAMP TOE



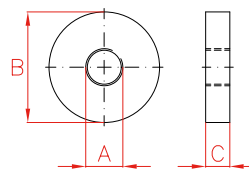
Reference	A	B	C	D
CA051323	26,7	87	39	36
CA101323	42,7	100	62	41

### 26 SINGLE CHAIN PLATE



Reference	A	B	C	D
CA051326	1 1/2"-16 UN	218	35	53
CA101326	2 1/4"-14 UNS	268	42	81
CA201326	3 5/16"-12 UN	385	60	109

### 28 BASE



Reference	A	B	C
CA201328	1 3/4"-11 BSP	128	28