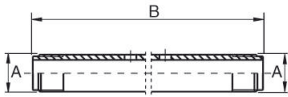
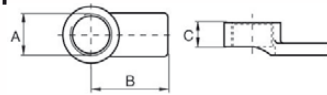


7-8-9-10



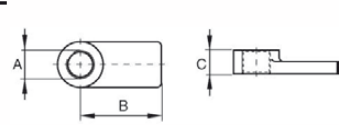
Ref.	A	B
CA051307	3/4 BSP-14	125
CA051308	3/4 BSP-14	250
CA051309	3/4 BSP-14	450
CA051310	3/4 BSP-14	575
CA101307	1 1/4 BSP-11	130
CA101308	1 1/4 BSP-11	250
CA101309	1 1/4 BSP-11	450
CA101310	1 1/4 BSP-11	700
CA201308	1 3/4 BSP-11	220
CA201309	1 3/4 BSP-11	480
CA201310	1 3/4 BSP-11	700

11



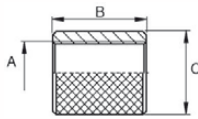
Ref.	A	B	C	D
CA051311	1 1/2 UN-16	71	31	42
CA101311	2 1/4 UNS-14	79	38	61
CA201311	3 5/16 UN-12	110	41	73

12



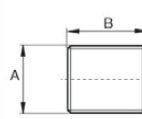
Ref.	A	B	C	D
CA051312	3/4 BSP-14	71	22	42
CA101312	1 1/4 BSP-11	80	32	60

13



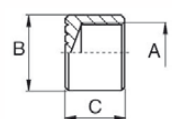
Ref.	A	B	C
CA051313	3/4 BSP-14	40	35
CA101313	1 1/4 BSP-11	49	55,5
CA201313	1 3/4 BSP-11	70	52

14



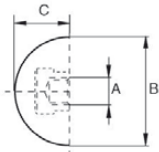
Ref.	A	B
CA051314	3/4 BSP-14	36
CA101314	1 1/4 BSP-11	52
CA201314	1 3/4 BSP-11	54

15



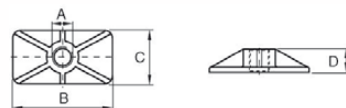
Ref.	A	B	C
CA051315	3/4 BSP-14	33	26
CA101315	1 1/4 BSP-11	51	34
CA201315	1 3/4 BSP-11	69	48

16



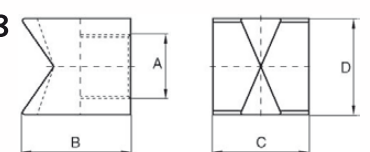
Ref.	A	B	C
CA051316	3/4 BSP-14	80	50
CA101316	1 1/4 BSP-11	90	55

17



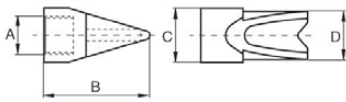
Ref.	A	B	C	D
CA051317	3/4 BSP-14	123	65	30
CA101317	1 1/4 BSP-11	164	102	31

18



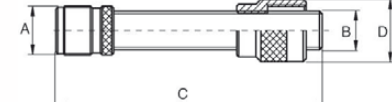
Ref.	A	B	C	D
CA051318	3/4 BSP-14	46	40	38
CA101318	1 1/4 BSP-11	60	69	56

19



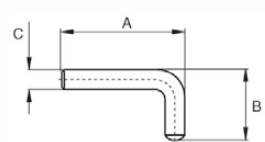
Ref.	A	B	C	D
CA051319	3/4 BSP-14	77	40	34
CA101319	1 1/4 BSP-11	99	55	43

20



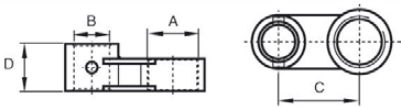
Ref.	A	B	C	D
CA051320	3/4 BSP-14	M20x2,5	138	32
CA101320	1 1/4 BSP-11	Tr30 - 5	151	54

21



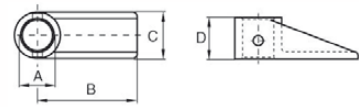
Ref.	A	B	C
CA051321	50	27	8
CA101321	76	42	12

22



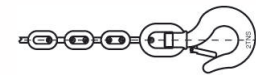
Ref.	A	B	C	D
CA051322	1 1/2 UN-16	26,75	61	36
CA101322	2 1/4 UNS-14	42,25	68	41

23



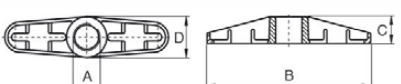
Ref.	A	B	C	D
CA051323	26,75	87	39	36
CA101323	42,75	100	62	41

25



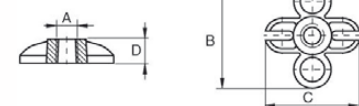
Ref.	A	B	C
CA051325	1 mt. Largo / Length / Longueur		
CA101325	1 mt. Largo / Length / Longueur		
CA201325	1 mt. Largo / Length / Longueur		

26



Ref.	A	B	C	D
CA051326	1 1/2 UN-16	218	35	53
CA101326	2 1/4 UNS-14	268	42	81
CA201326	3 5/16 UN-12	385	60	109

27



Ref.	A	B	C	D
CA051327	3/4 BSP-14	113	101	27
CA101327	1 1/4 BSP-11	145	140	31

28



Ref.	A	B	C
CA201328	1 3/4 BSP-11	128	28